

FLOW-GO

SUPPLY ABS VALVE

AIR MANAGEMENT SYSTEMS

PRODUCT PROPERTIES

FLOW-GO R9003 ABS Supply Valve

DEC introduces the new **FLOW-GO R9003 ABS supply valve**, designed for optimized airflow control and installation flexibility.

The valve is equipped with a flow block plate (one-third section) that can be easily attached to the disk, allowing the airflow to be directed precisely as required. The flow block plate is provided in a separate small bag included with each valve.

Rubber sealing for perfect fitting and airtightness.



PACKAGING

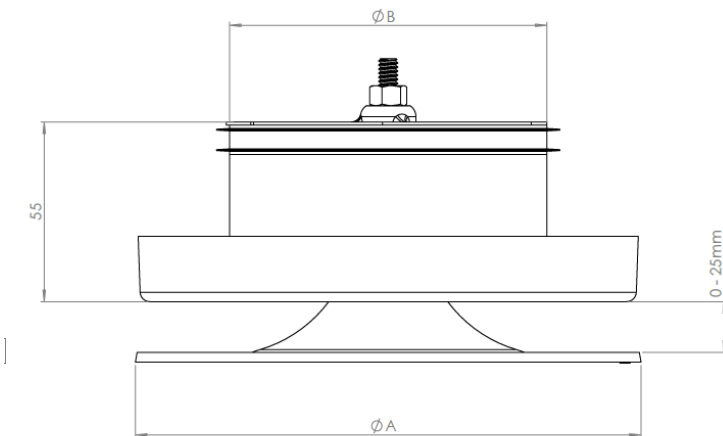
Each valve is individually packed in a plastic bag, with a specified number of units supplied in bulk packaging.

Article code:

FLOWGO100R9003 - FLOW-GO Supply valve ABS - 100mm R9003

FLOWGO125R9003 - FLOW-GO Supply valve ABS - 125mm R9003

DIMENSIONS in mm



Type	ØA(mm)	ØB (mm)
FLOWGO100R9003	155	100
FLOWGO125R9003	180	125

LIABILITY:

The information contained in this brochure was current on the publication date. DEC INTERNATIONAL reserves the right to make changes in details at any time without prior notice. In order to avoid misunderstandings, any interested party is advised to contact DEC INTERNATIONAL checking for any changes in materials and/or information after this brochure was published.

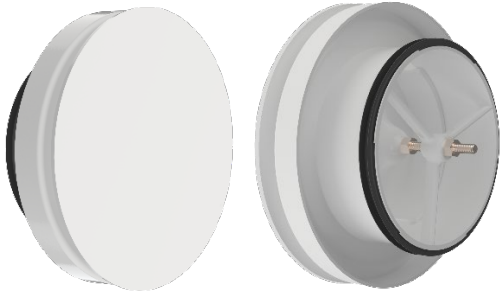
PLEASE NOTICE:

The consultant is responsible for the actual installation and mounting of the product. The mentioned values with respect to temperatures are not appropriate to be used to determine the physical properties. These properties are also dependent on humidity and the temperature of the air inside and outside of the H.V.A.C. system.

TRADEMARKS:

DEC International and the DEC logo are trademarks, or registered trademarks of Dutch Environment Corporation BV in the Netherlands and/or other countries.



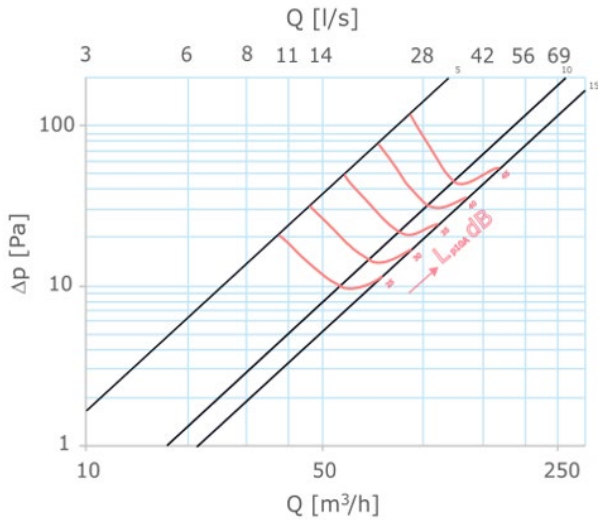


FLOW-GO

SUPPLY ABS VALVE

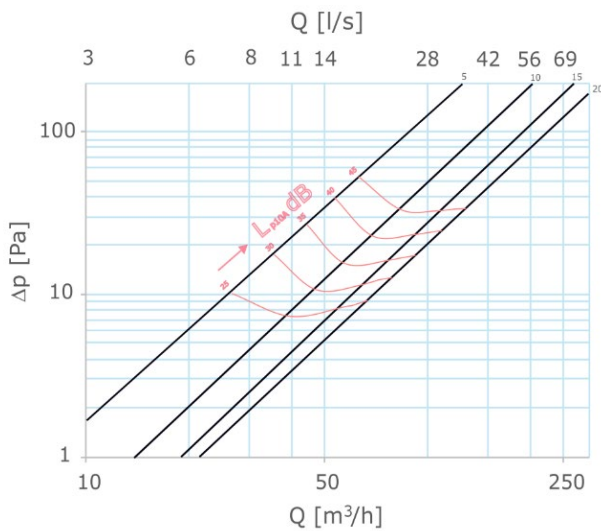
AIR MANAGEMENT SYSTEMS

FLOW-GO 100 supply without restrictor



K-Factor:	
5mm	$K_f = 2,3$
10mm	$K_f = 5,17$
15mm	$K_f = 6,26$

FLOW-GO 100 supply with restrictor



K-factor with restrictor (K is loss coefficient)

K-Factor:	
5mm	$K_f = 2,28$
10mm	$K_f = 3,75$
15mm	$K_f = 4,23$

DEFINITIONS

5-15	Opening valve body to disc.	mm
Q	Air volume	(l/s) - (m³/h)
p	Total pressure loss	(Pa)
L_{p10A}	Sound pressure level with 4 dB room attenuation (10 m²sab)	[dB(A)]

LIABILITY:

The information contained in this brochure was current on the publication date. DEC INTERNATIONAL reserves the right to make changes in details at any time without prior notice. In order to avoid misunderstandings, any interested party is advised to contact DEC INTERNATIONAL checking for any changes in materials and/or information after this brochure was published.

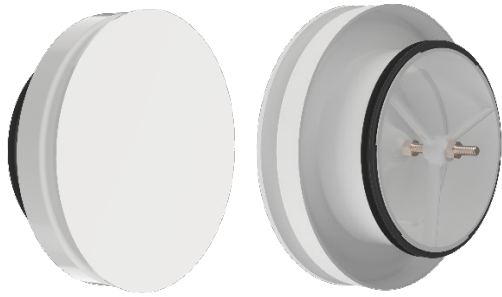
PLEASE NOTICE:

The consultant is responsible for the actual installation and mounting of the product. The mentioned values with respect to temperatures are not appropriate to be used to determine the physical properties. These properties are also dependent on humidity and the temperature of the air inside and outside of the H.V.A.C. system.

TRADEMARKS:

DEC International and the DEC logo are trademarks, or registered trademarks of Dutch Environment Corporation BV in the Netherlands and/or other countries.



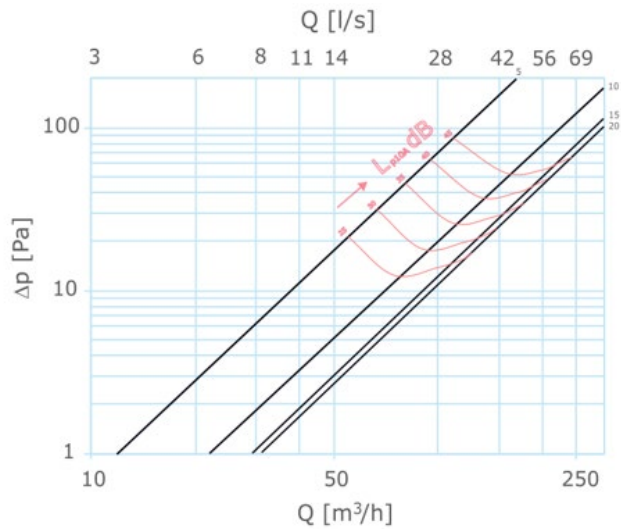


FLOW-GO

SUPPLY ABS VALVE

AIR MANAGEMENT SYSTEMS

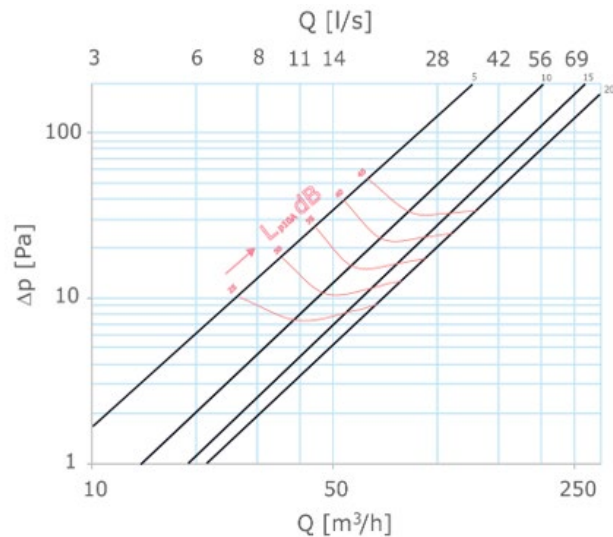
FLOW-GO 125 supply without restrictor



K-factor without restrictor (*K is loss coefficient*)

K-Factor:	
5mm	Kf = 3,31
10mm	Kf = 6,18
15mm	Kf = 7,91
20mm	Kf = 8,41
25mm	Kf = 8,69

FLOW-GO 125 supply with restrictor



K-factor with restrictor (*K is loss coefficient*)

K-Factor:	
5mm	Kf = 2,39
10mm	Kf = 4,02
15mm	Kf = 5,22
20mm	Kf = 6,21
25mm	Kf = 7,29

DEFINITIONS

5-20	Opening valve body to disc.	mm
Q	Air volume	(l/s) - (m ³ /h)
p	Total pressure loss	(Pa)
L _{p10A}	Sound pressure level with 4 dB room attenuation (10 m ² sab)	[dB(A)]

LIABILITY:

The information contained in this brochure was current on the publication date. DEC INTERNATIONAL reserves the right to make changes in details at any time without prior notice. In order to avoid misunderstandings, any interested party is advised to contact DEC INTERNATIONAL checking for any changes in materials and/or information after this brochure was published.

PLEASE NOTICE:

The consultant is responsible for the actual installation and mounting of the product. The mentioned values with respect to temperatures are not appropriate to be used to determine the physical properties. These properties are also dependent on humidity and the temperature of the air inside and outside of the H.V.A.C. system.

TRADEMARKS:

DEC International and the DEC logo are trademarks, or registered trademarks of Dutch Environment Corporation BV in the Netherlands and/or other countries.

